

## 1200 GRAND BOULEVARD, KANSAS CITY, MO



### BUILDING HIGHLIGHTS

- 2-Story Office Building located in downtown Kansas City
- 18,675 SF available now
- Large conference center and fitness facility available in adjacent Town Pavilion
- Secure/covered parking and visitor parking available
- **Rental Rate: \$21.00/RSF**

### LEASING CONTACT

**RYAN BIERY, SIOR**

P (816) 701-5017  
rbiery@copaken-brooks.com

**CONNER BEESE**

P (816) 701-5011  
cbeese@copaken-brooks.com

## Welcome to 1200 Grand,

This property is ideally centrally located downtown adjacent to the Kansas City Power and Light District. It's prominent corner location gives space users great signage visibility and allows employees to enjoy easy walkability to restaurants, entertainment and all the lifestyle perks downtown has to offer.

The building includes visitor parking in the attached Town Pavilion garage as well large conference center and a fitness facility.



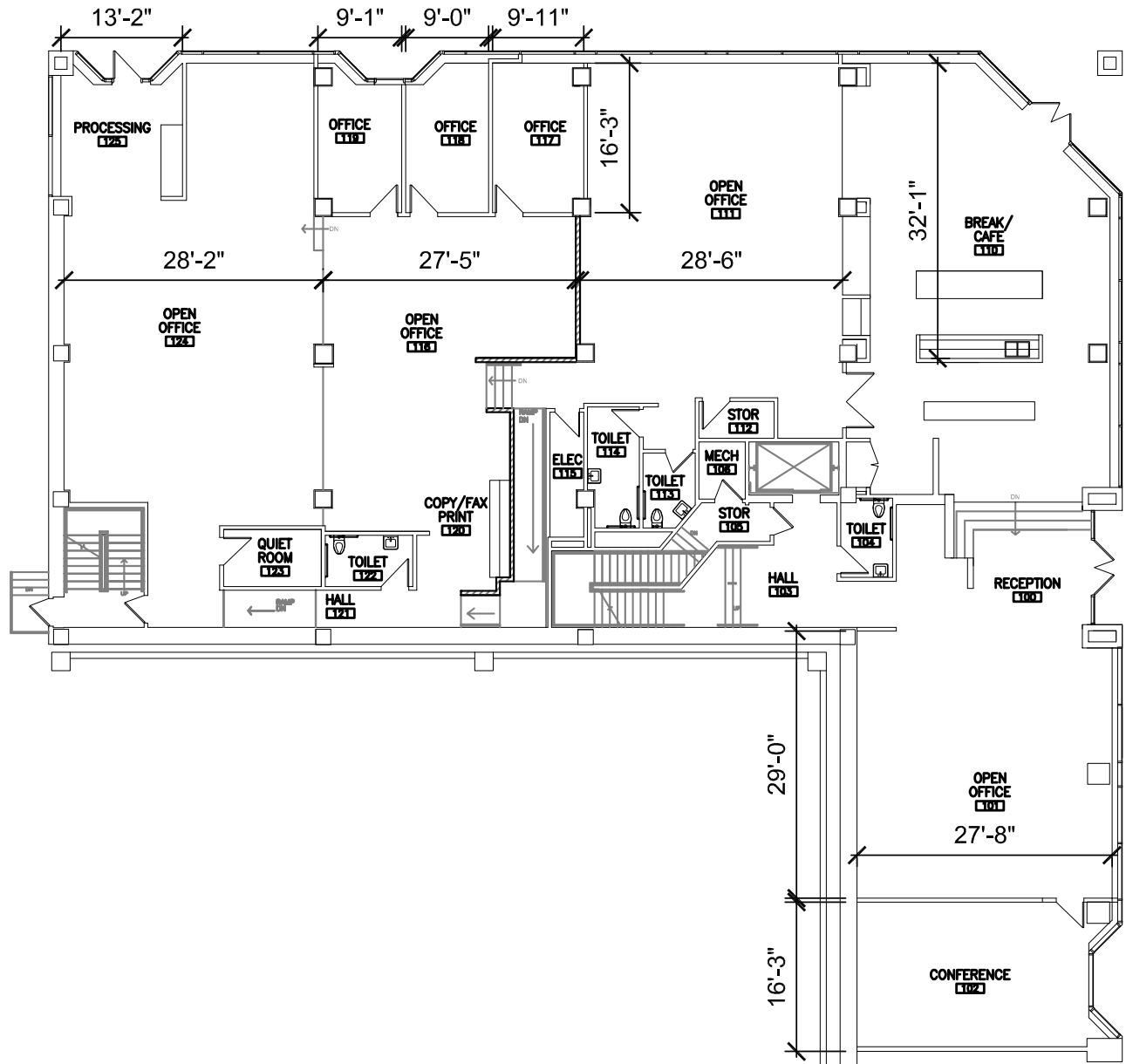




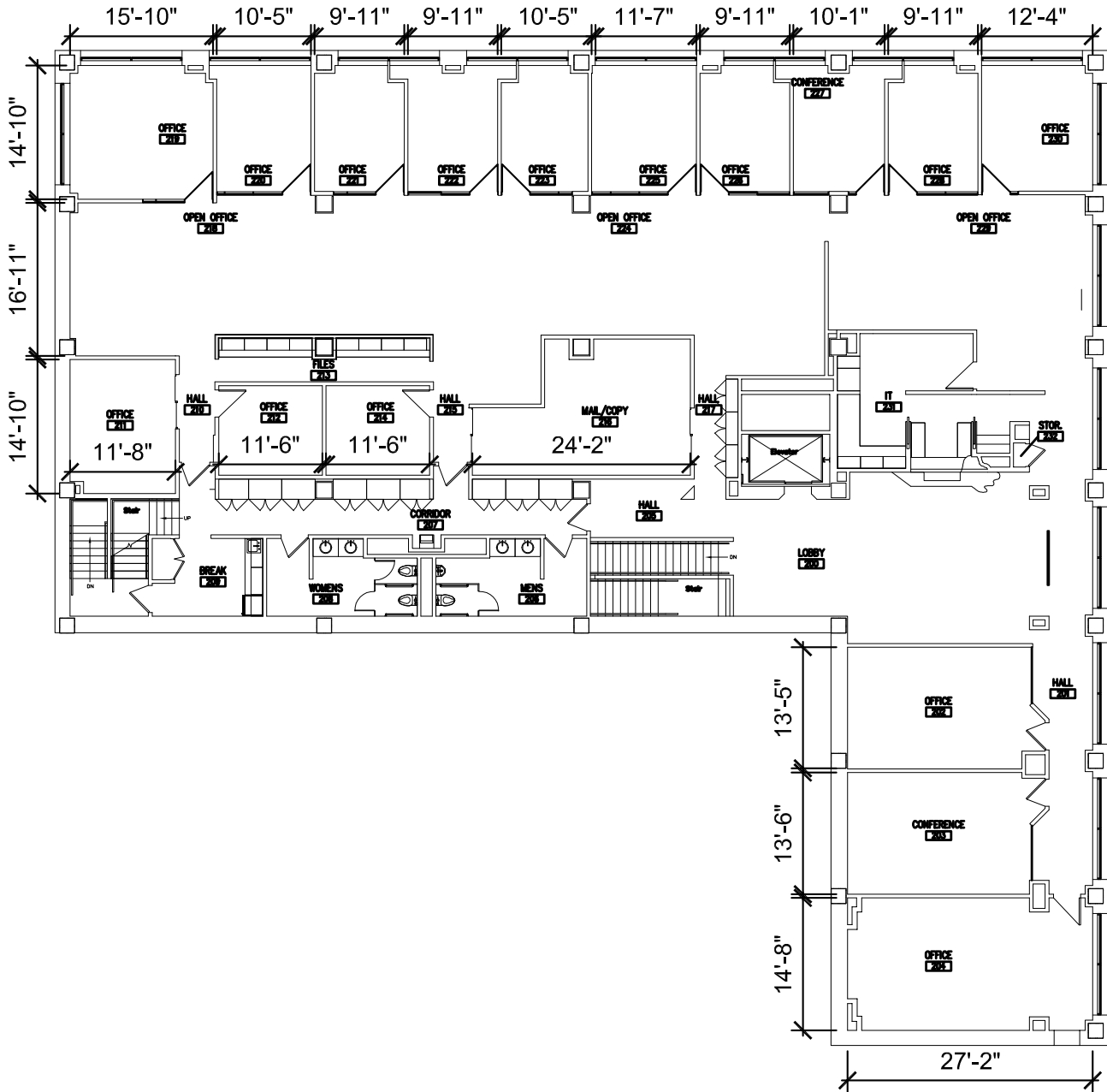


# Place yourself in the heart of the action

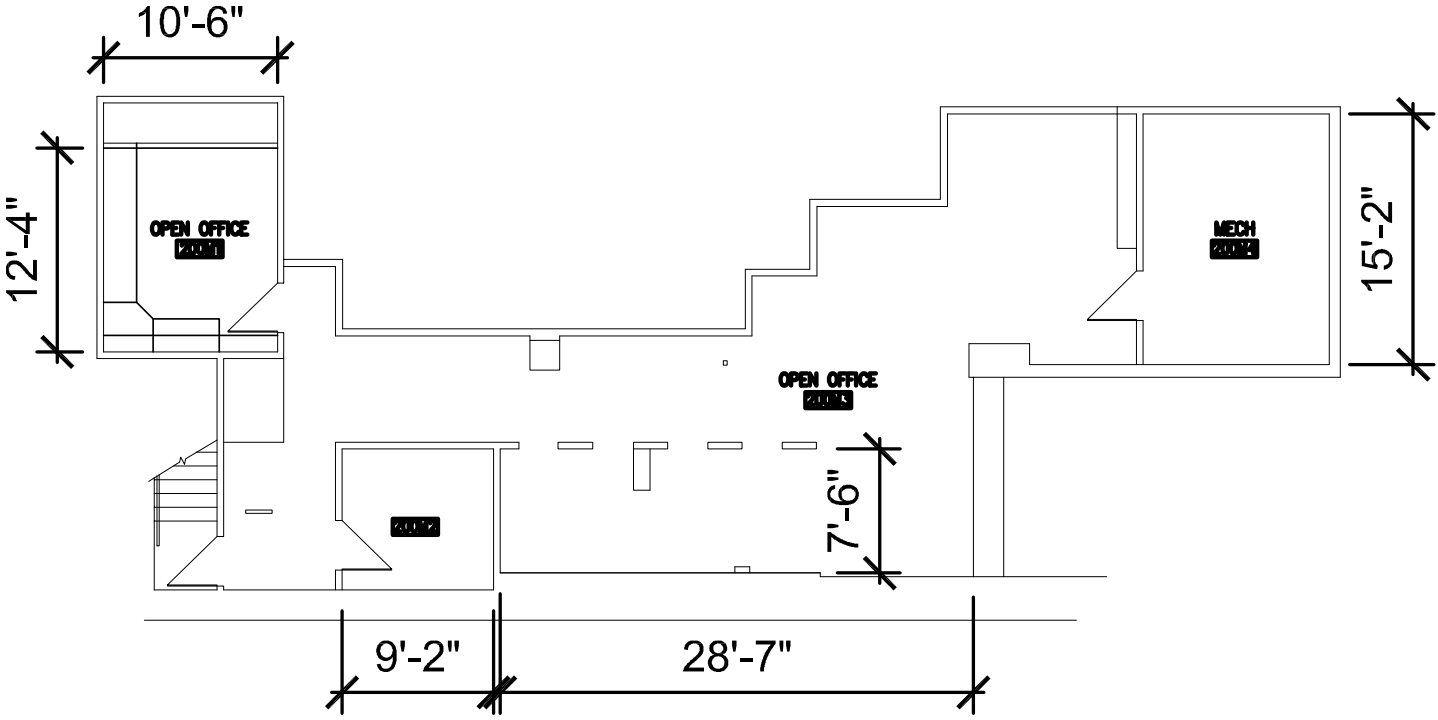




# SECOND FLOOR



# SECOND FLOOR MEZZANINE





# NOW LEASING OFFICE SPACE



## LEASING CONTACTS

**RYAN BIERY, SIOR**

P (816) 701-5017

[rbiery@copaken-brooks.com](mailto:rbiery@copaken-brooks.com)

**CONNER BEESE**

P (816) 701-5011

[cbeese@copaken-brooks.com](mailto:cbeese@copaken-brooks.com)

All information furnished regarding property for sale or lease is from sources deemed reliable, but no warranty or representation is made as to the accuracy thereof and the same is subject to errors, omissions, changes of prices, rental or other conditions, prior sale or lease, or withdrawal without notice.