

Growing the Economy

2020 Downtown KC Scorecard

A rising tide lifts all boats

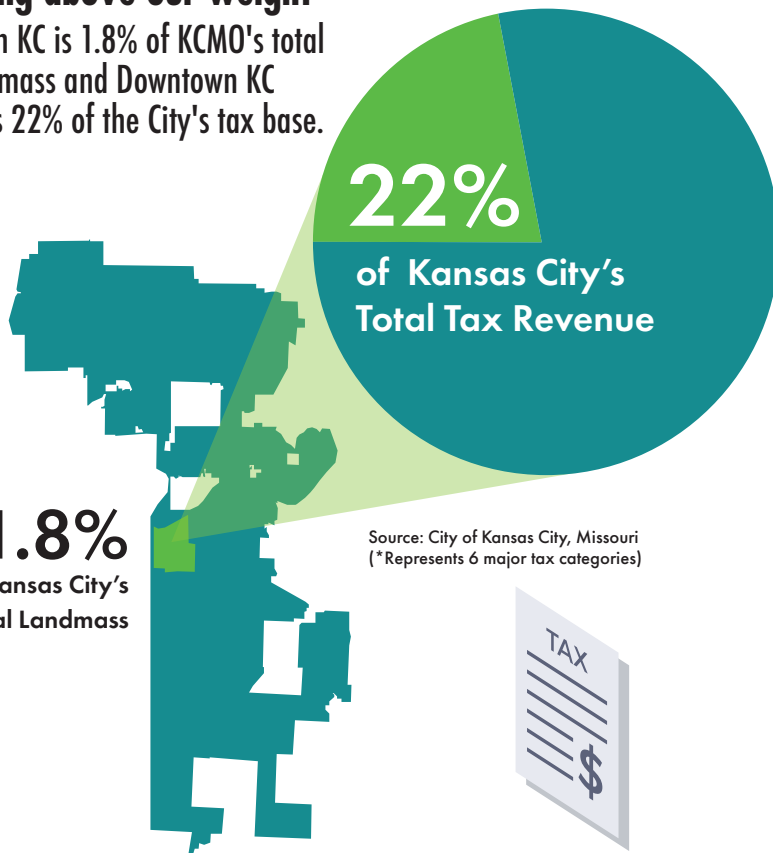
Between 2002 and 2019 total tax revenue grew by 115% for Downtown KC while the City experienced total growth of 97%.

Source: City of Kansas City, Missouri Finance Department



Punching above our weight

Downtown KC is 1.8% of KCMO's total land mass and Downtown KC generates 22% of the City's tax base.



Source: City of Kansas City, Missouri
(* Represents 6 major tax categories)



10.5 million+ Visitors are Experiencing Downtown KC's New Amenities

237%
increase



118%
increase



Between 2002-2019
Hotel/Motel tax revenue
increased by **237%** for
Downtown KC, while the City of
Kansas City, Missouri saw an
increase of **118%**.



265%
increase



121%
increase



Between 2002-2019
Restaurant tax revenue
increased by **265%** for
Downtown KC, while the City of
Kansas City, Missouri saw an
increase of **121%**.

Source: City of Kansas City, Missouri Finance Department

Transit Oriented Development is a reality: Sales tax impact of KC Streetcar

Between 2014 and 2019
Downtown Transportation
Development District Sales Tax
grew 55% whereas the
City's Sales Tax increased by 18%.

55%
increase



18%
increase



2014-2019: Over \$2 billion in development follows the KC Streetcar line.

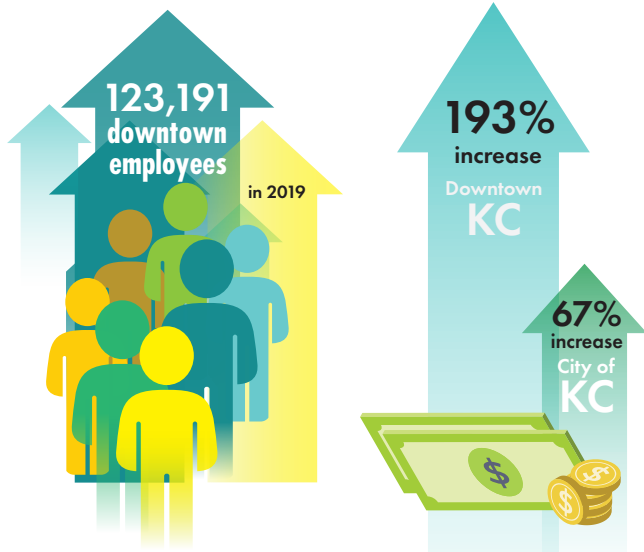
Source: City of Kansas City, Missouri Finance Department



For more information visit
downtownkc.org

@godowntownkc
#downtownKC20

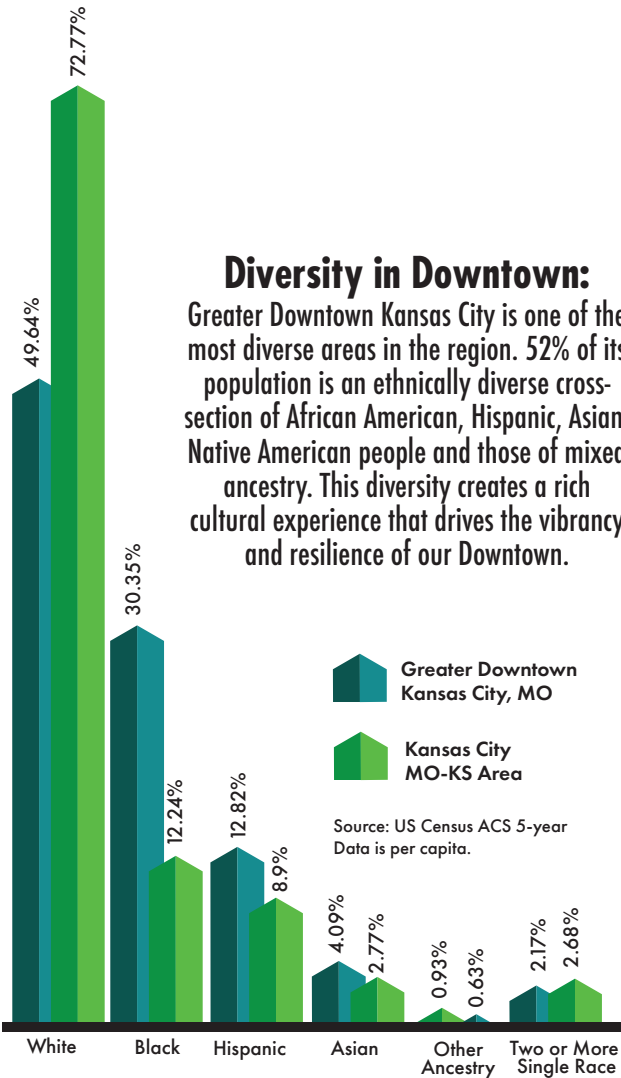
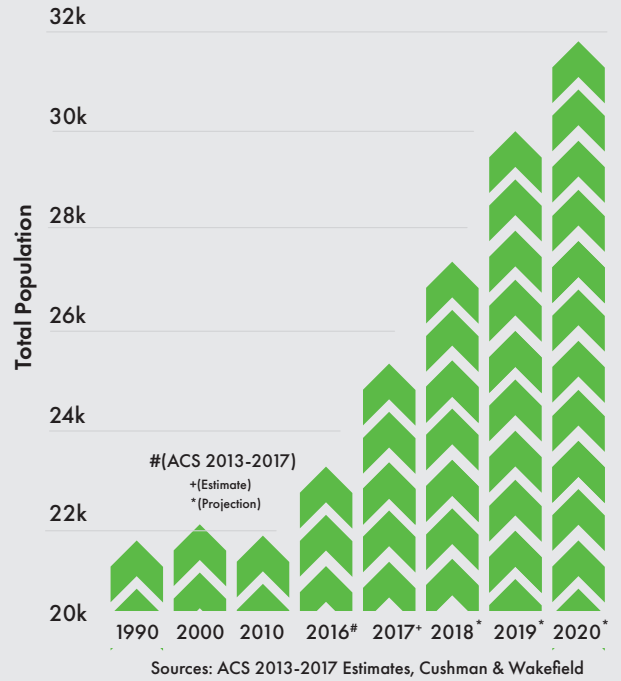
Downtown KC is a thriving Employment Center



Between 2002-2019 earnings tax revenue **increased by 193%** for Downtown KC while the City's earning tax revenue **increased 67%**. This additional revenue funds citywide and neighborhood initiatives.

Source: City of Kansas City, Missouri Finance Department

Downtown KC's population is booming: As our quality of life goes up, more housing units continue to be built to accommodate the incredible demand. Mix that with the relative affordability of Greater Downtown Kansas City, and you have a recipe for growth.

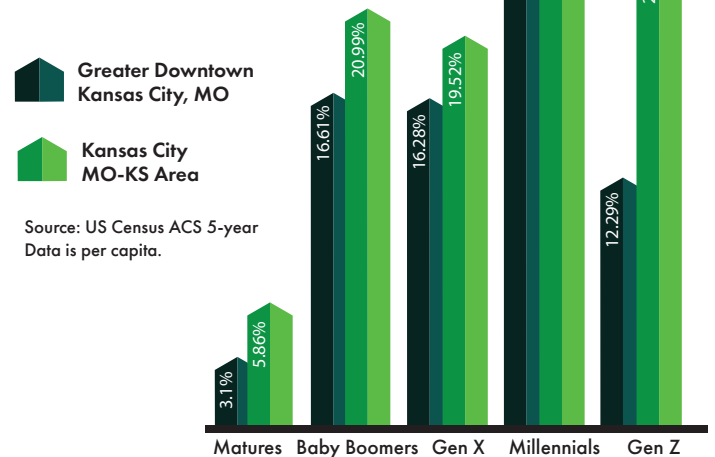


Diversity in Downtown:

Greater Downtown Kansas City is one of the most diverse areas in the region. 52% of its population is an ethnically diverse cross-section of African American, Hispanic, Asian, Native American people and those of mixed ancestry. This diversity creates a rich cultural experience that drives the vibrancy and resilience of our Downtown.

We are a young Downtown, but home to all ages:

Millennials consistently choose to live Downtown. At 52%, Greater Downtown Kansas City has the highest percentage of millennials in our community, compared to 30% for the region.



51.72% are Millennials